

Quality of Higher Education in Sweden Is the quality too low?

Jane Meckbach¹, Lina Wahlgren^{1 2} & Ingemar Wedman¹

¹ The Swedish School of Sport and Health Sciences

² Örebro university

jane.meckbach@gih.se

AEA-Europe 20071108

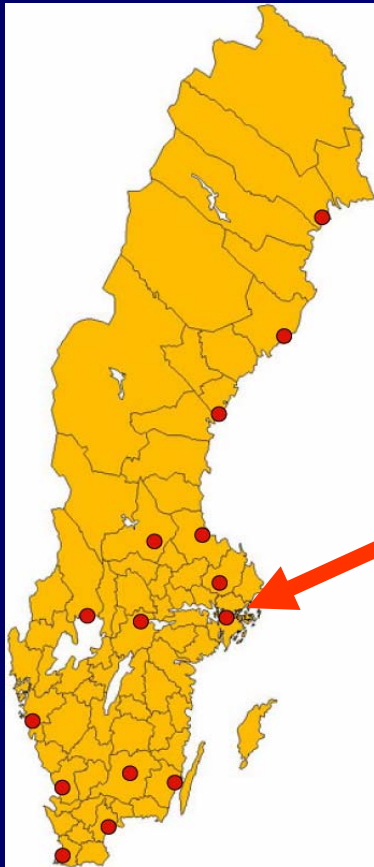
Focus

- Physical Education Teacher Education (PETE) Programs in Sweden
- Diagnostic information
- **Quality of higher education**
 - Study demands
 - Time for working
 - Free time activities

Method

- Questionnaire
 - 60 questions
 1. Background
 2. Knowledge related to sports and physical activity
 3. Experiences from education in the area of physical activity and health
 - 16 universities
 - May 2006

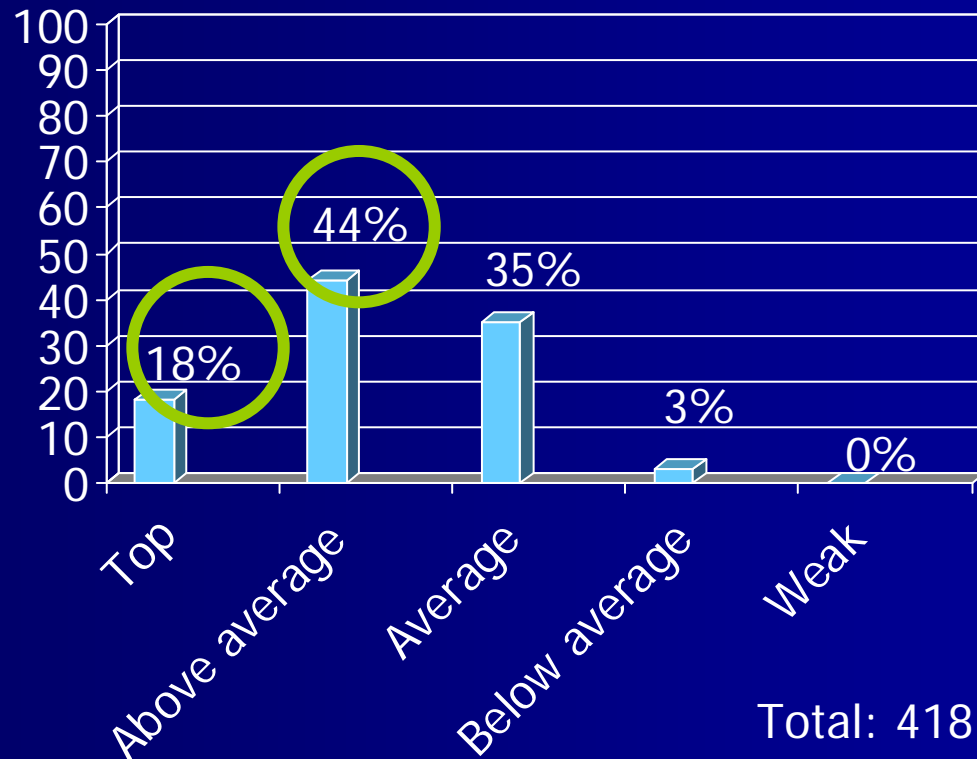
Background



- 14 universities
- Total: 427
 - Men: 229 (54%)
 - Women: 192 (46%)

Student achievement

Self rated experiences of student achievement at elementary and secondary school level



Study demands

Do you think the demands associated with your study program are reasonable?

Opinion	Frequency	Per cent
Yes	317	77
No	47	11
Don't know	49	12
Total	413	100

Study demands

Is it easy to manage the studies in sport and health at your department?

Opinion	Frequency	Per cent
Yes	167	41
No	111	27
Don't know	128	32
Total	406	100

Cross table

student achievement

– easiness to manage studies

		Opinion – easiness to manage studies			
		Yes	No	Don't know	Total
Student achievement	Top	37	15	23	75
	Above average	80	44	50	174
	Average	45	44	54	143
	Below average	3	8	1	12
	Total	165	111	128	404

Time for working

Is it possible to combine work with PETE studies?

Opinion	Frequency	Per cent
Yes	226	55
No	132	32
Don't know	55	13
Total	413	100

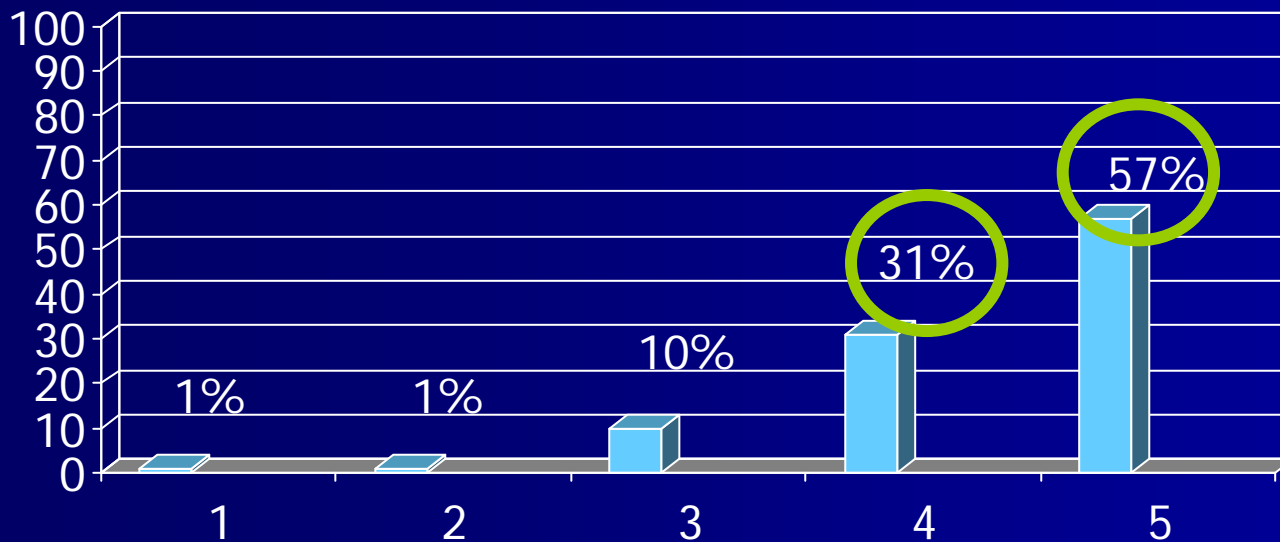
Cross table

student achievement – possibilities to work

		Opinion – possibilities to work			
		Yes	No	Don't know	Total
Student achievement	Top	37	24	14	75
	Above average	107	50	22	179
	Average	78	49	18	145
	Below average	3	8	1	12
	Total	225	131	55	411

Free time activities

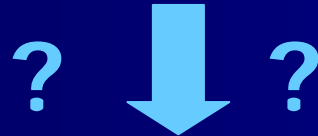
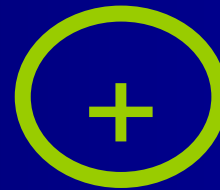
Do you, as a student, have an interest in exercise on your free time? (1=Almost never – 5=Very frequent)



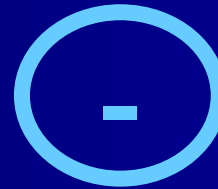
Total: 420

Discussion

- Time for working



- Time for studying



– 20-25 hours a week

(The Swedish National Agency for Higher Education 2002; 2007)



- Free time activities

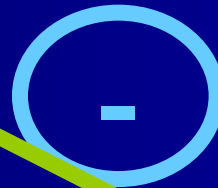
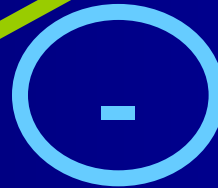


Discussion

- Full-time studies = part-time studies

■ Achievements

■ Examination results



Quality?

Discussion

■ Examination

(Wedman, Wahlgren & Franke-Wikberg, 2006)

- Failing to fail
(Lankshear, 2005)
- Win-win situation
- No quality control

Conclusion

Is the quality too low?

Thanks!